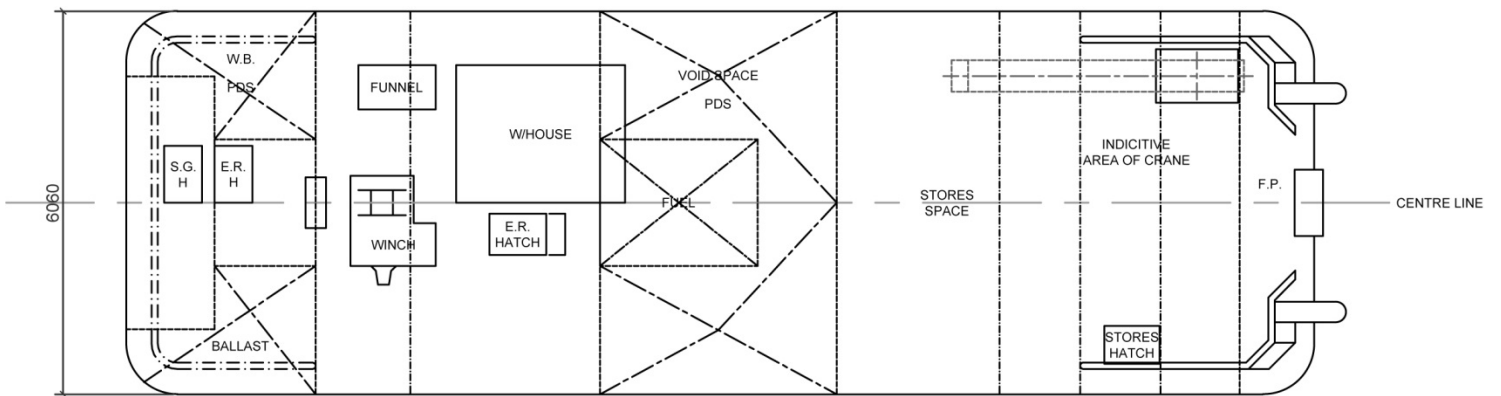
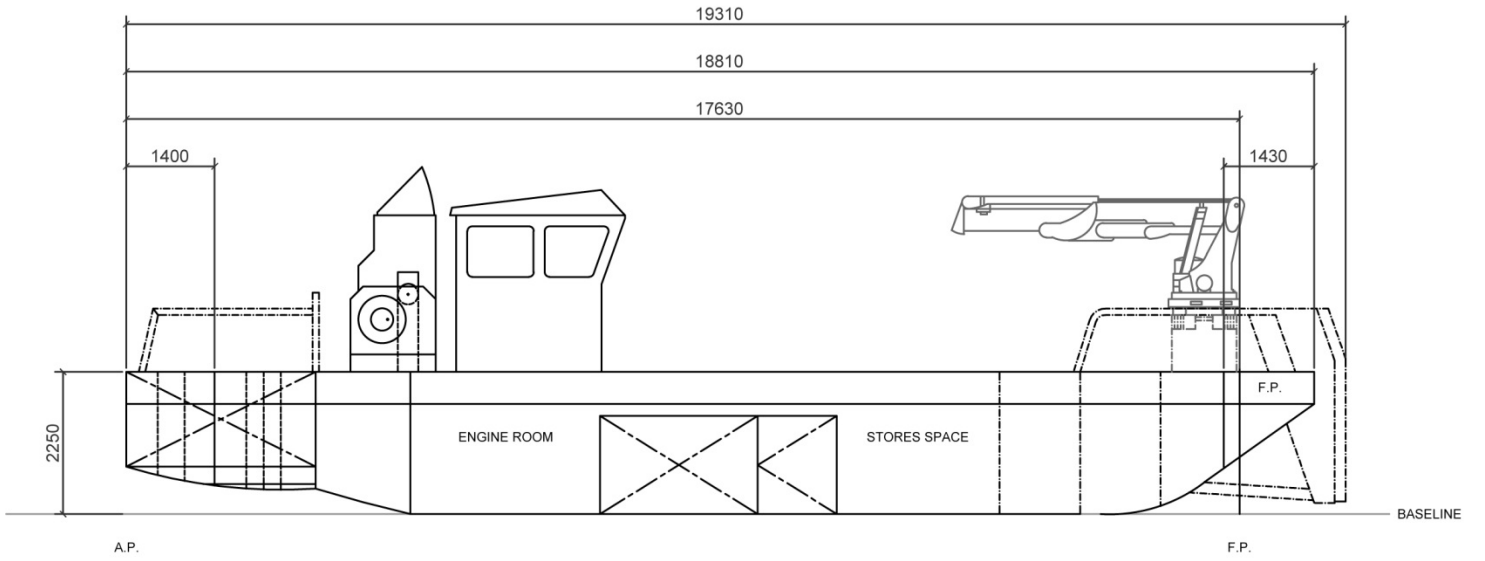




## Forth Boxer

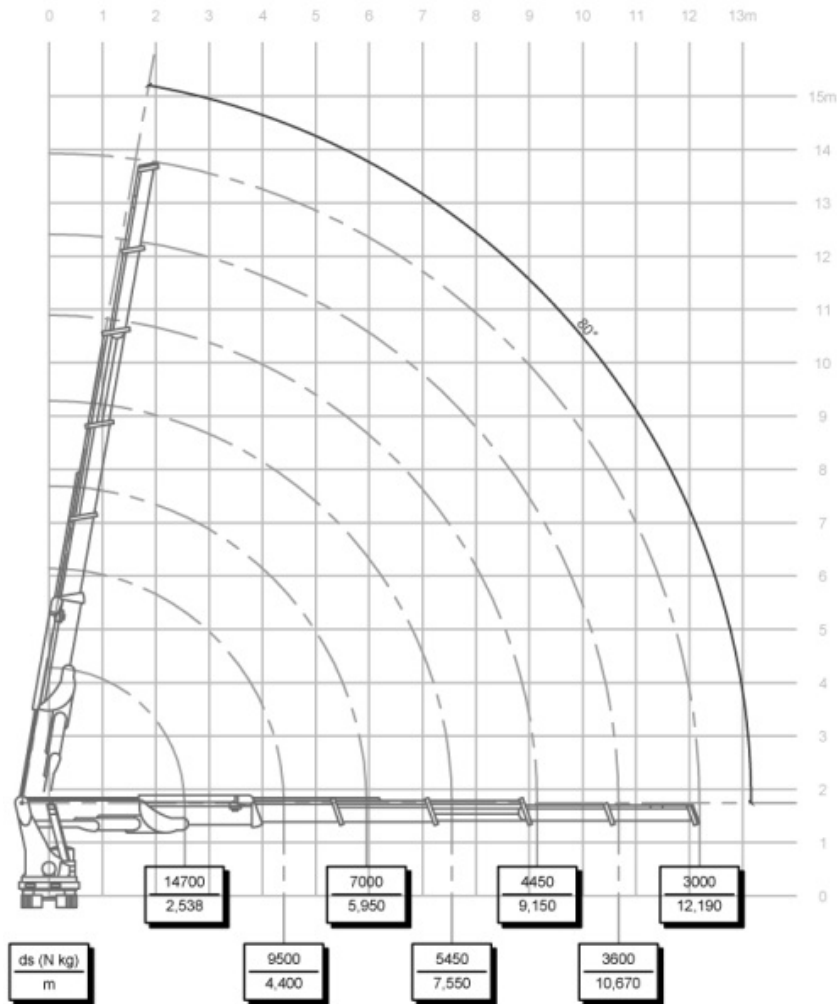
General Information
<b>Built:</b> 1995
<b>Dimensions:</b> 18.6m x 6.06m x 1.4m
<b>Draft:</b> 1.65m
<b>Clear Deck Area:</b> 14m x 5m
Hull and deck plating 10mm
Sheer strake 30mm
<b>Bollard Pull:</b> 6T
<b>Speed:</b> 8.5 knots

Main Equipment
Twin Caterpillar 3306 440HP (total) at RPM
2 fixed pitch propellers in nozzles
Lister generator LPW4, 14kVA – 220/380v
UK MCA Workboat Code CAT 3
Deck Format
15T @ 5m/min anchor handling winch
2 x 25T coupling winches
Bow roller 30T SWL
1 x 65kg high holding power anchor
Plough and detachable 'A' frame (6 cubic/metre)
Towing crucifix
44TM marine crane (360°) C/W 2T hydraulic winch
25T flush fitting securing points
Nautical & Communication Equipment
500 watt search light
Furuno FR 1830 radar
Furuno FR 4300 echo sounder
Global navigator 310 DGPs
Cell phone
VHF



- |
- 0
- |
- 1
- |
- 2
- |
- 3
- |
- 4
- |
- 5
- |
- 6
- |
- 7
- |
- 8
- |
- 9
- |
- 10
- |
- 11

### LOAD DIAGRAM



### HOOK LIFTING DIAGRAM MANUAL EXTENSIONS

