



Forth Hunter

General Information
Classification: UK MCA Work Boat code of Practice CAT 3
Built:
Length: 15m
Vessel Type: Mono Hull Multi-role work vessel
Classification: UK MCA Work Boat code of Practice
Area of operation: 20 NM form safe haven
Draft (Lightship): 1.2m
Beam: 6m
Draft (Deck cargo departure conditions): 1.4m
Displacement: 45 tonnes (Lightship)
Bollard Pull: 6.2 tonnes
Free running speed: 8.5 kts

Main Equipment
Main engines: 2 x Doosan MD196 Ti 640HP
Engine Colling: Blokland box coolers
Generator: Beta-Marine 21kVA 50Hz
Stern Gear: Grease lubricated stern tubes. Twin 5-blade props
Steering: Hand Hydraulic, Twin rudder
Electrics: 24V and 240V single + 3 phase circuits
Deck Crane: AMCO -VEBA V817M 5S CE (790kg at 14.1m)
Deck Winch: 5 tone tugger winch
Deck Cargo Capacity: 20 tonnes
Liquid Cargo Capacity: 2 x 10000 litres
Fuel Bunkers: 2 x 2000 litres

1.1 GENERAL ARRANGEMENT

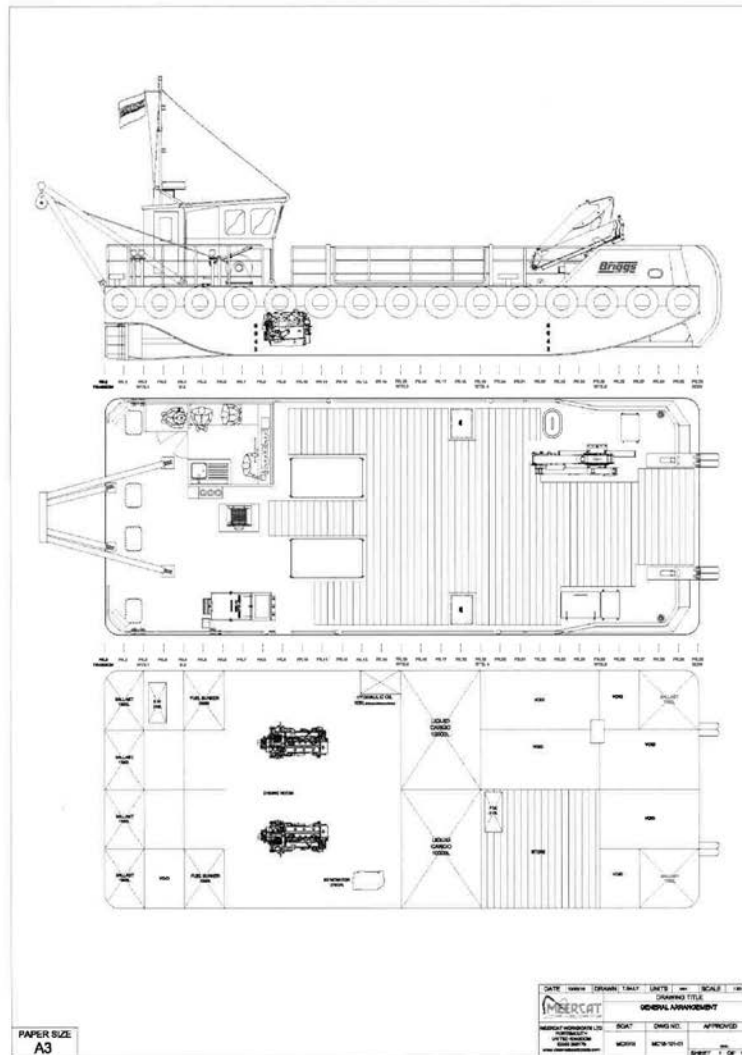


Figure 1 – Vessel GA