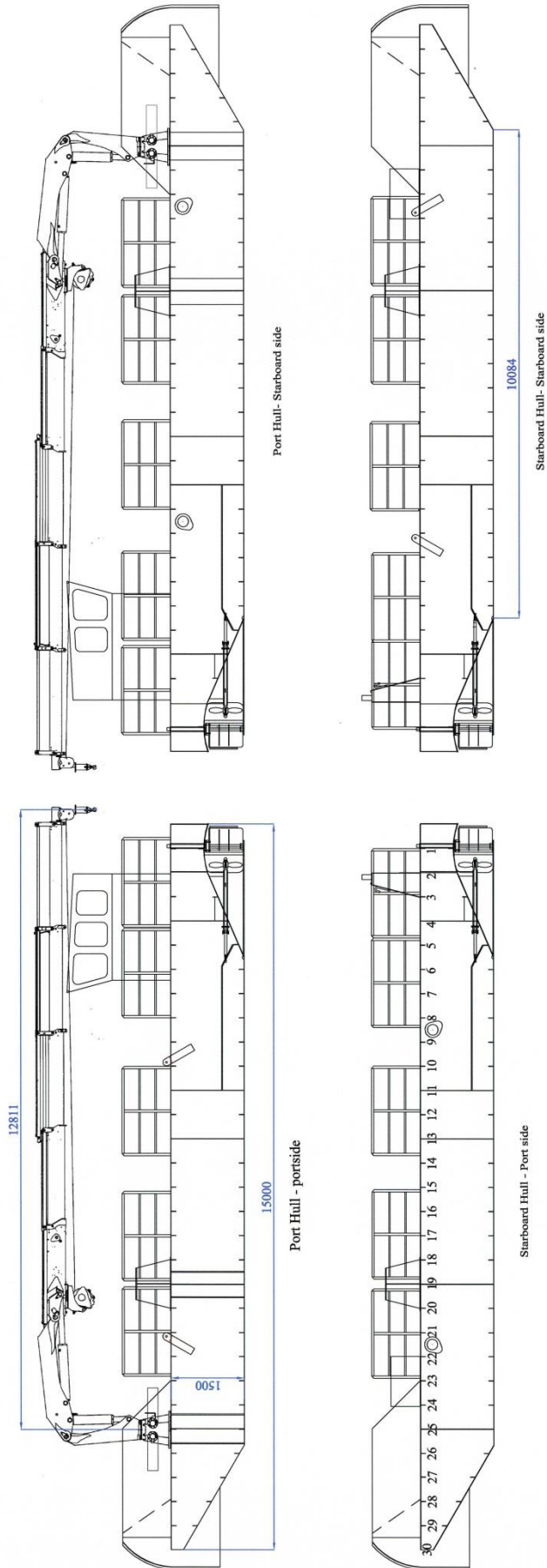




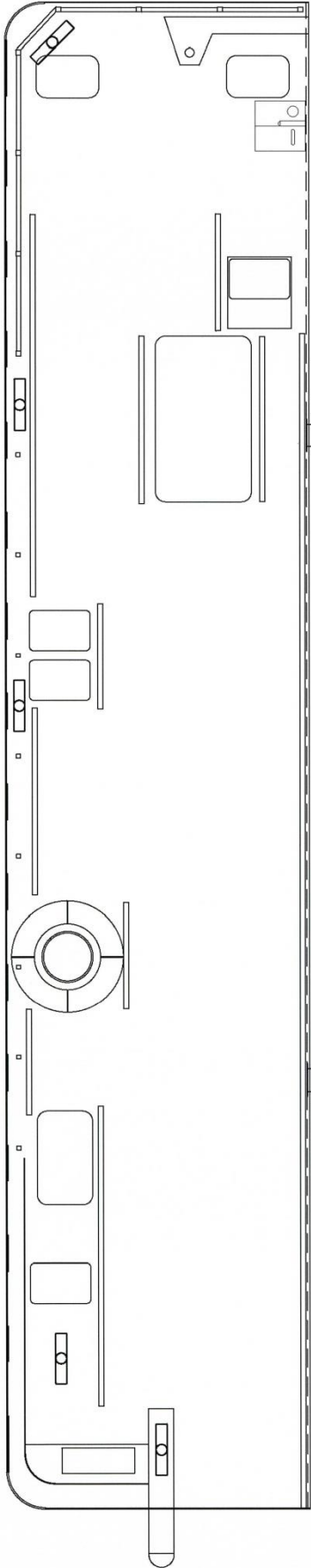
Forth Linesman

General Information
Road transportable as 2 x 2.975m and 1 x 2.3m wide hulls
LOA: 15.5m
Fast Demob - 1 hour from truck to working
3.5T bollard pull on 800m draft
20T deck load capacity with deck strength of 7.5T/M ²
Cargo tanks for fresh water (26T) and diesel (9T)
Built to Cat 3 classification under the UK Workboat Code of Practice
All plating Lloyds Grade A - 8mm

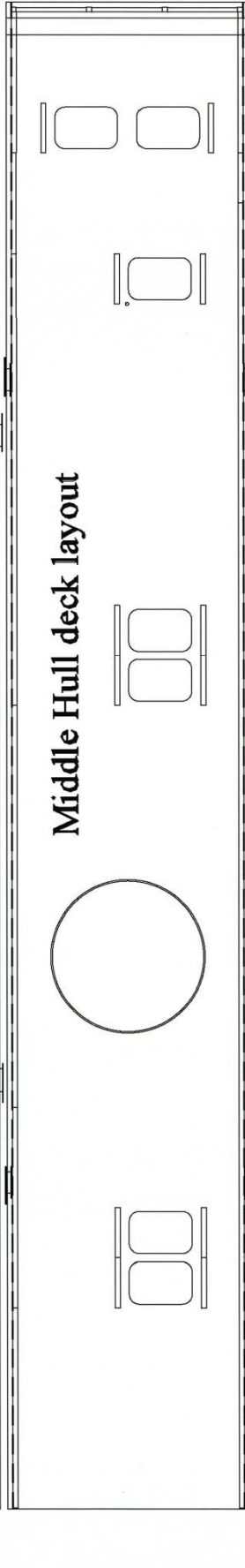
Main Equipment
Twin 230 hp Doosan engines
10kVA generator
Palfinger 23T/M crane with 12.4m outreach
1 x 10T Hydraulic Deck Winch



Starboard Hull deck layout



Middle Hull deck layout



Port Hull deck layout
Including wheelhouse footprint

