



[ENQUIRIES@BRIGGSMARINE.COM](mailto:ENQUIRIES@BRIGGSMARINE.COM)

+44 1592872939

## VESSEL DETAILS

### YEAR OF BUILD

2016

### LENGTH

27.27m

### BREADTH

11.50m

### MAX DRAFT

3.06m

### MIN DRAFT

2.76m

### MAIN ENGINES

2 x Caterpillar C32 TTA

### CRANES

1 x HS Marine AKC 325 LHE3

1 x HS Marine AKC 185 HE4

### GROSS TONNAGE

178.90T

### WINCHES

1 x Dromec 80T SWL anchor handling winch

1 x Dromec 50T SWL towing winch

1 x Dromec 12T SWL tugger winch

4 x Dromec 15T SWL mooring winch

## ACCOMMODATION

10 berths

5 Cabins

## CERTIFICATION

Bureau Veritas Tug Unrestricted Navigation AUT-UMS/DYNAPOS AM/AT MCA Workboat Code cat 1

## BHP

2400

## BOLLARD PULL

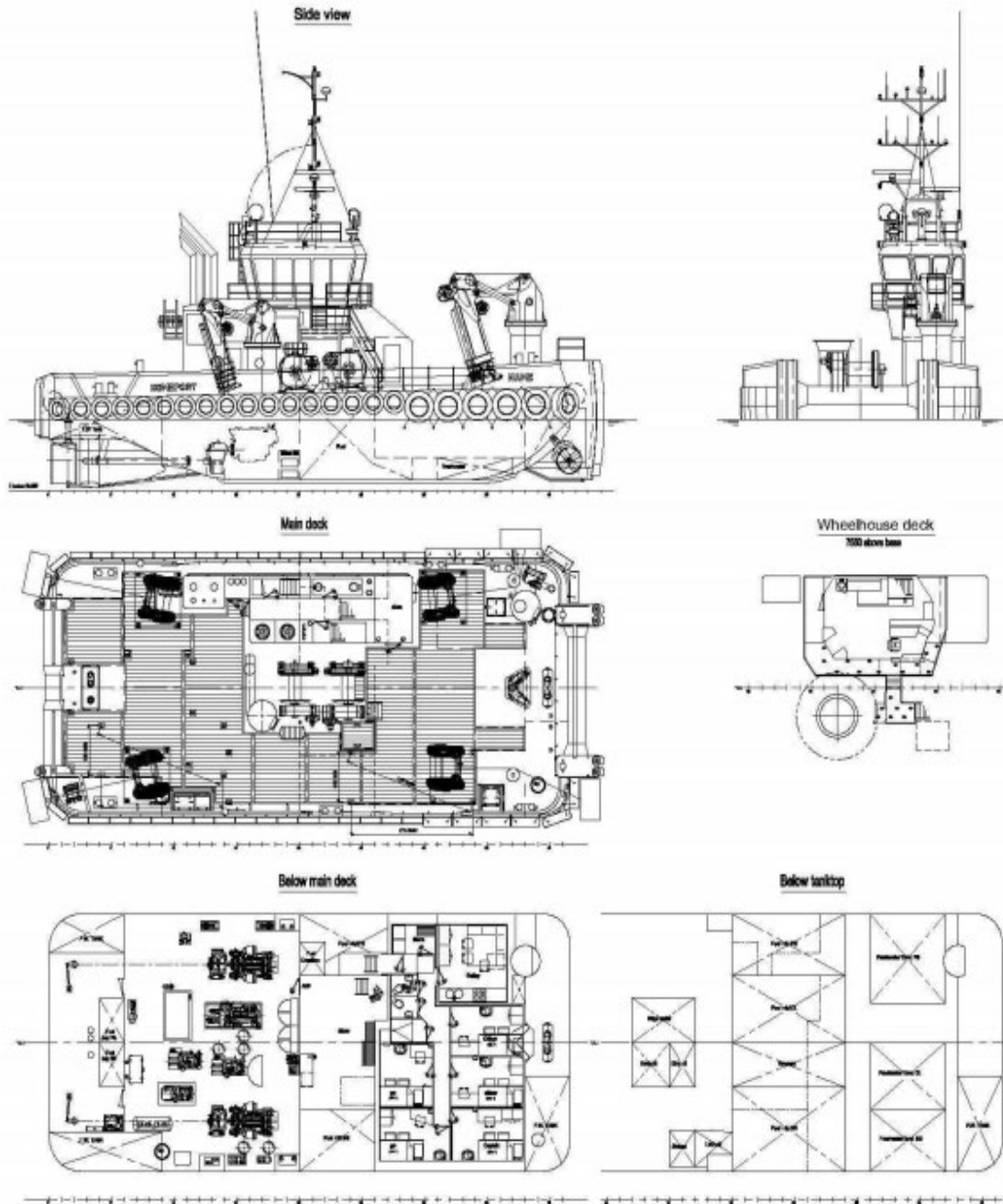
33T



FOR DETAILS:

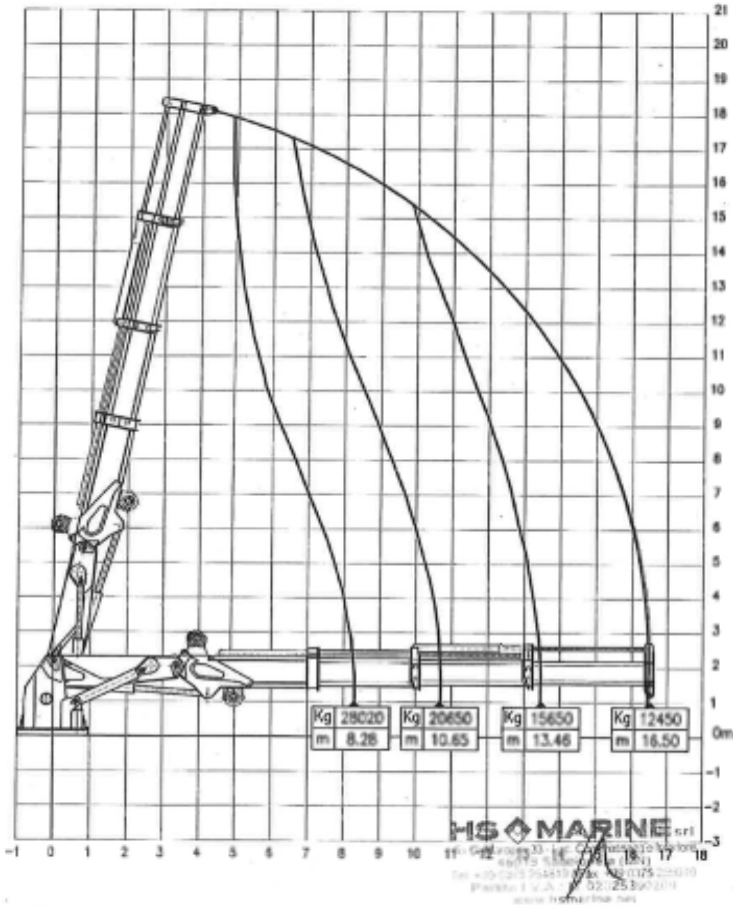
[ENQUIRIES@BRIGGSMARINE.COM](mailto:ENQUIRIES@BRIGGSMARINE.COM)

+44 1592872939



WORKING DIAGRAM with HOOK  
 (Max.permitted heel/trim 6°/3')

HS MARINE

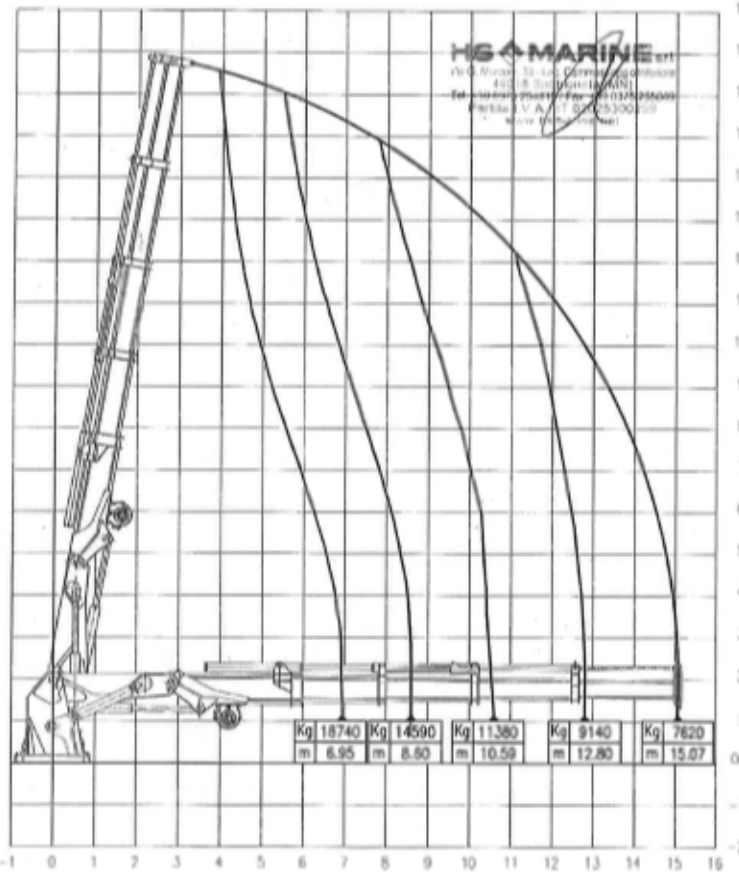


Marine Crane model AKC 325 LHE3

Crane built and designed in according to DIN 15018 Class H1-B3

WORKING DIAGRAM with HOOK  
 (Max.permitted heel/trim 6°/3')

HS MARINE



Marine Crane Model AKC 185 HE4