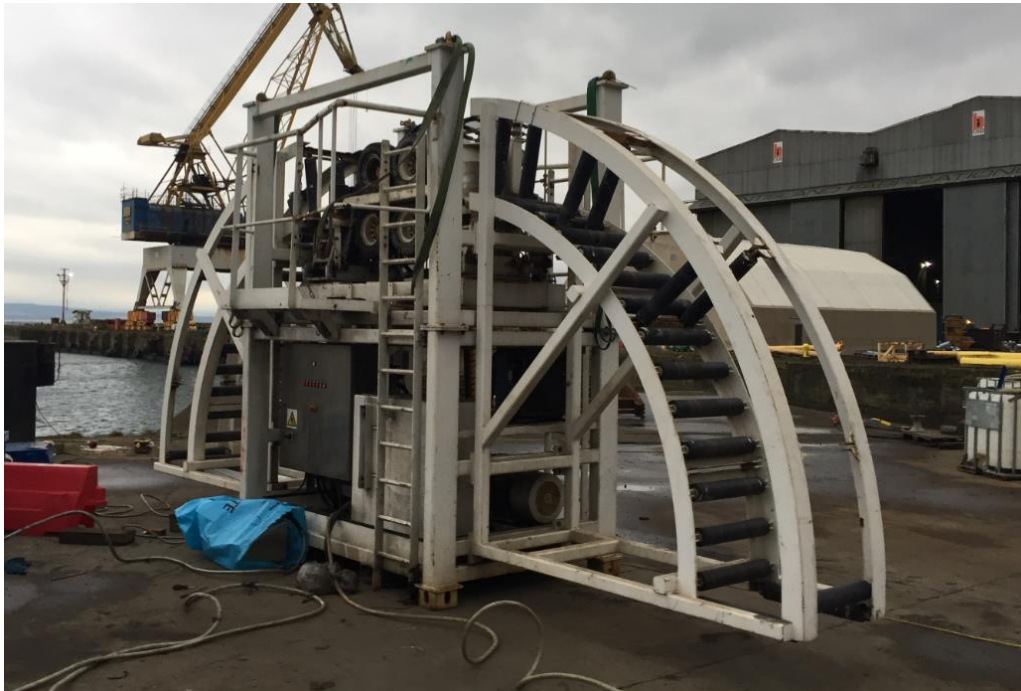


2 Pair Powered Quadrant (CEN01)



Our 2 pair powered quadrant is designed to be used in the transportation of cables both power and telecommunications. The unit is powered by an integral hydraulic power pack. The system can be concreted remotely via the control desk. The powered quadrant is an assembly of three parts; a centre frame supporting the linear cable engine (LCE), with a quarter roller quadrant bolted to each side of the centre frame.

The quadrant can be used on top of cable gantries or suspended by suitable crane using a 4-leg 4 metre wire rope sling. It is designed to feed cable with a tension of up to 10 kN at a lay speed of up to 1000 m/hr and recovery speed of up to 500 m/hr.

General Information

Length: 7190 mm

Width: 1720 mm

Height: 3635 mm

Weight: 6650 kg

Wheel Diameter: 630 mm

Maximum Cable Diameter: 140 mm

Minimum Cable Bend Radius: 2.1 m

Maximum Tyre Pressure: 80psi

Maximum Laying Speed: 1000 m/hr

Maximum Recovery Speed: 500 m/hr

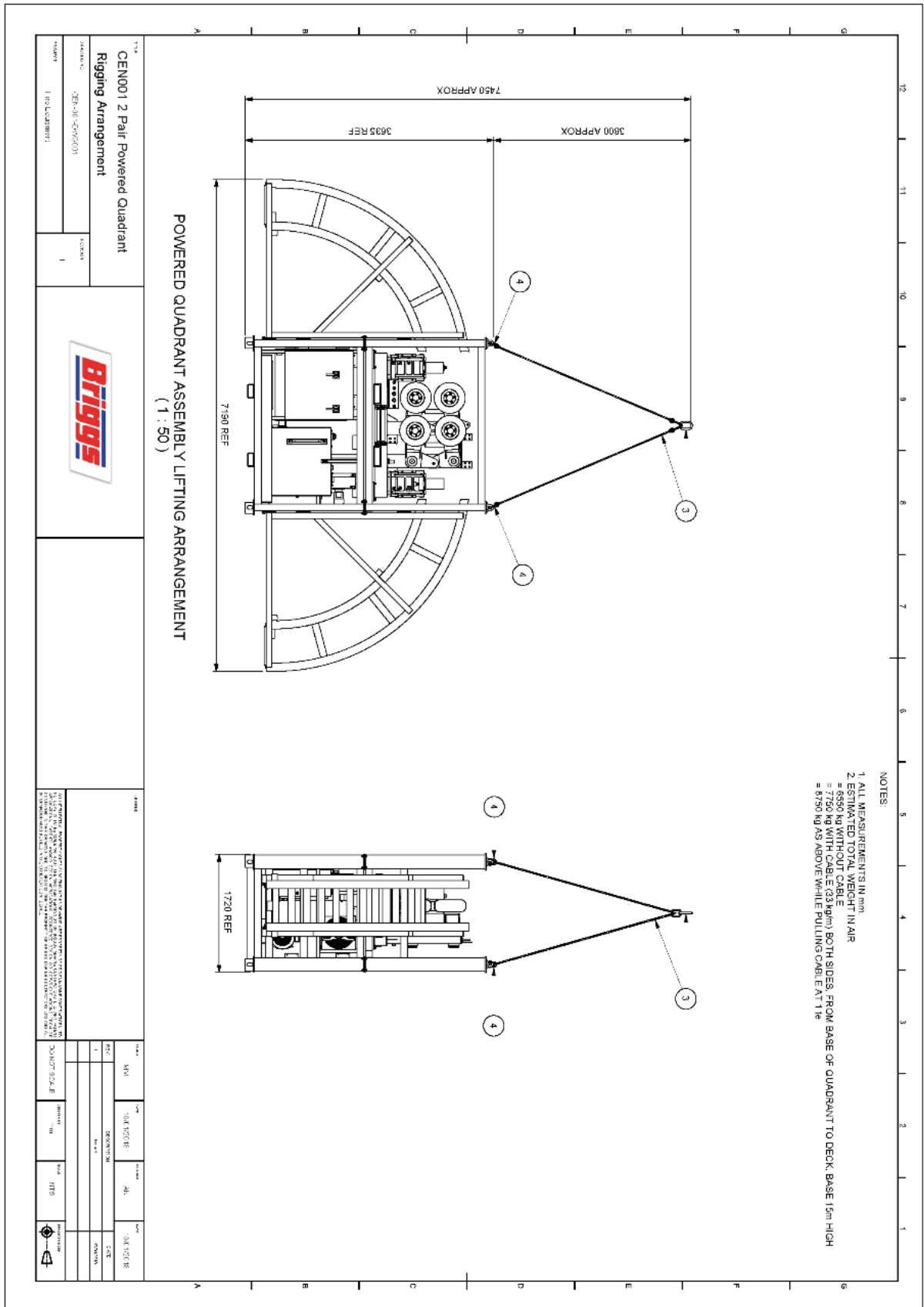
Maximum Hauling / Laying Tension: 10 kN

Pinch Variable: 0 – 170 bar

Electric Motor: 22Kw, 3 ph, 415/440v, 50/60 Hz

Main Pump Max Flow: 40 lpm @ 1450 rpm,

Main Pump Max Flow: Max pressure 210 bar



- NOTES:
1. ALL MEASUREMENTS IN MM
 2. ESTIMATED TOTAL WEIGHT IN AIR
 = 6950 kg WITHOUT CABLE
 = 7750 kg WITH CABLE (33 kg/m)
 = 8750 kg AS ABOVE WHILE PULLING CABLE AT 1g

CEN001 2 Pair Powered Quadrant Rigging Arrangement				<small>THIS DRAWING IS THE PROPERTY OF BRIGGS MARINE & ENVIRONMENTAL SERVICES. IT IS TO BE USED ONLY FOR THE PROJECT AND VESSEL SPECIFICALLY IDENTIFIED IN THE DRAWING TITLE. IT IS NOT TO BE REPRODUCED OR TRANSMITTED IN ANY FORM OR BY ANY MEANS, ELECTRONIC OR MECHANICAL, INCLUDING PHOTOCOPYING, RECORDING, OR BY ANY INFORMATION STORAGE AND RETRIEVAL SYSTEM. WITHOUT THE WRITTEN PERMISSION OF BRIGGS MARINE & ENVIRONMENTAL SERVICES.</small>	
DRAWING NO: CEN-001-0006-001 1 of 1 (Customer)	SHEET NO: 1	SCALE: 1:50	DATE: 08/12/18	DRAWN BY: [Signature]	CHECKED BY: [Signature]
PROJECT: 110-10-10-10-10-10	VESSEL: 1	QUANT SCALE: 1	UNIT: METERS	UNIT: METERS	