

# 2.5m MBR Trolley Base Subsea Quadrant



## General Information

**Minimum Bend Radius:** 2.5m

**Length:** 5331 mm

**Width:** 2879 mm

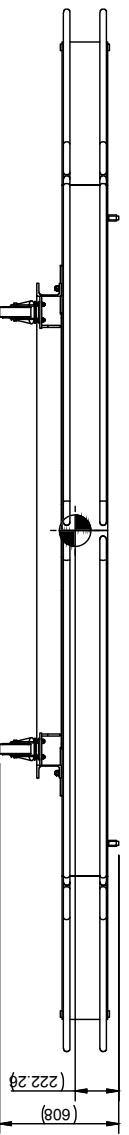
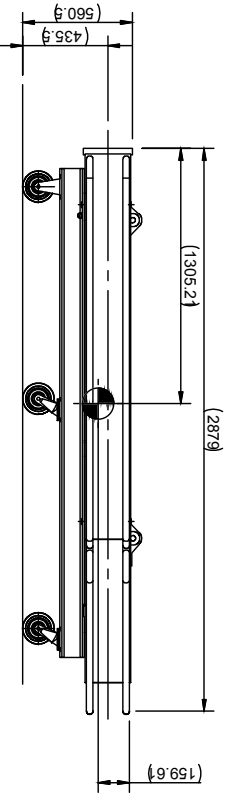
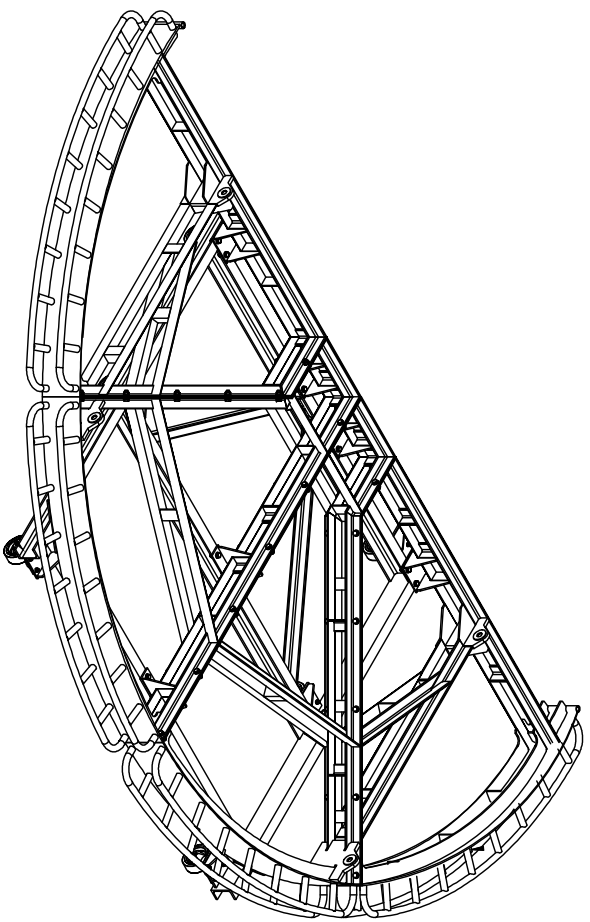
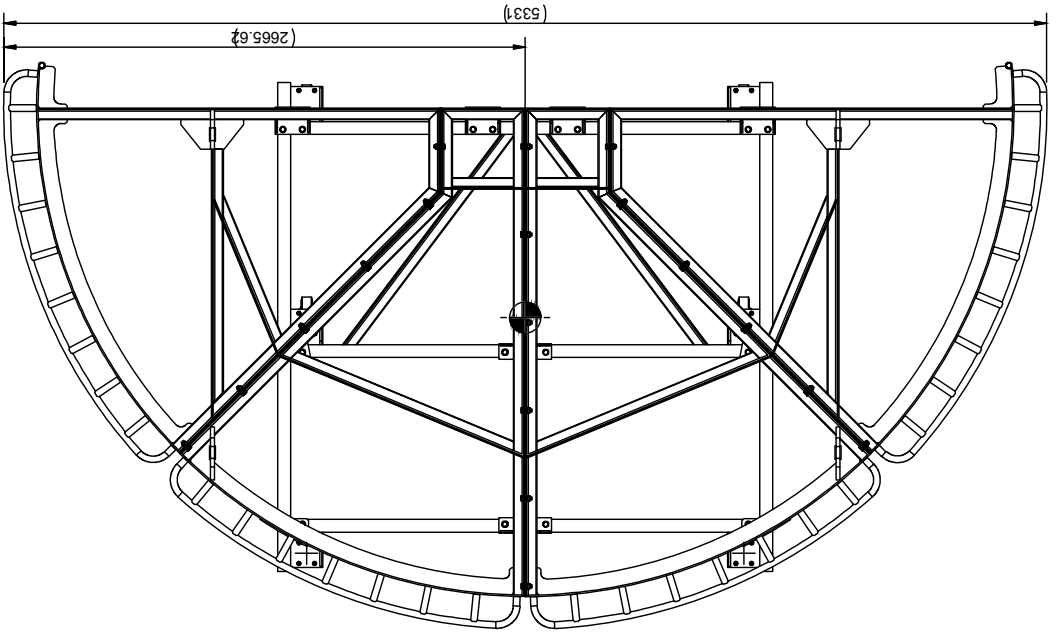
**Height:** 1500 mm

**Weight:** 1000 kg

### Further Info:

- Trolley attachment (if required)

12 | 11 | 10 | 9 | 8 | 7 | 6 | 5 | 4 | 3 | 2 | 1



TITLE  
CAB09 2.5m MBR  
Trolley Deployment Quadrant

DRAWING NO. CAB09-DWG001

REVISION  
1

PROJECT  
Hire Equipment



LEGEND

ALL INTELLECTUAL PROPERTY RIGHTS RESERVING IN THIS DRAWING ARE PROPERTY OF BRIGGS MARINE CONTRACTORS LTD. NO PARTS TO BE MADE WITHOUT THE WRITTEN PERMISSION OF BRIGGS MARINE CONTRACTORS LTD. ANY PARTS NOT SHOWN IN THIS DRAWING ARE TO BE MADE TO THE DESIGN AND DIMENSIONS OF THE PARTS SHOWN IN THIS DRAWING AND ITS DESIGNS ARE THE PROPERTY OF BRIGGS MARINE CONTRACTORS LTD AND ALL INFORMATION MUST BE HELD IN THE STRICTEST CONFIDENCE.

| REV. | DATE       | DESCRIPTION | CHECKED | DATE       |
|------|------------|-------------|---------|------------|
| 1    | 10/01/2018 | Issue       | AK      | 10/01/2018 |

|            |           |
|------------|-----------|
| UNIT       | MM        |
| SCALE      | NTS       |
| PROJECTION | 1st Angle |

DO NOT SCALE

