



ENQUIRIES@BRIGGSMARINE.COM

+44 1592872939

VESSEL DETAILS

YEAR OF BUILD

2016

LENGTH

15m

BREADTH

6.00m

MAX DRAFT

1.2m

MIN DRAFT

1.2m

MAIN ENGINES

2 X Doosan MD196Ti

CRANES

Iron Fist IFG177M5
3.1T @ 4.5Metre
650Kg @14.7Metre

GROSS TONNAGE

45t Lightship

WINCHES

1 x 5t Tugger Winch

ACCOMMODATION

N/A

CERTIFICATION

Workboat Code Cat 3

BHP

640

BOLLARD PULL

6.2T



FOR DETAILS:

ENQUIRIES@BRIGGSMARINE.COM

+44 1592872939

1.1 GENERAL ARRANGEMENT

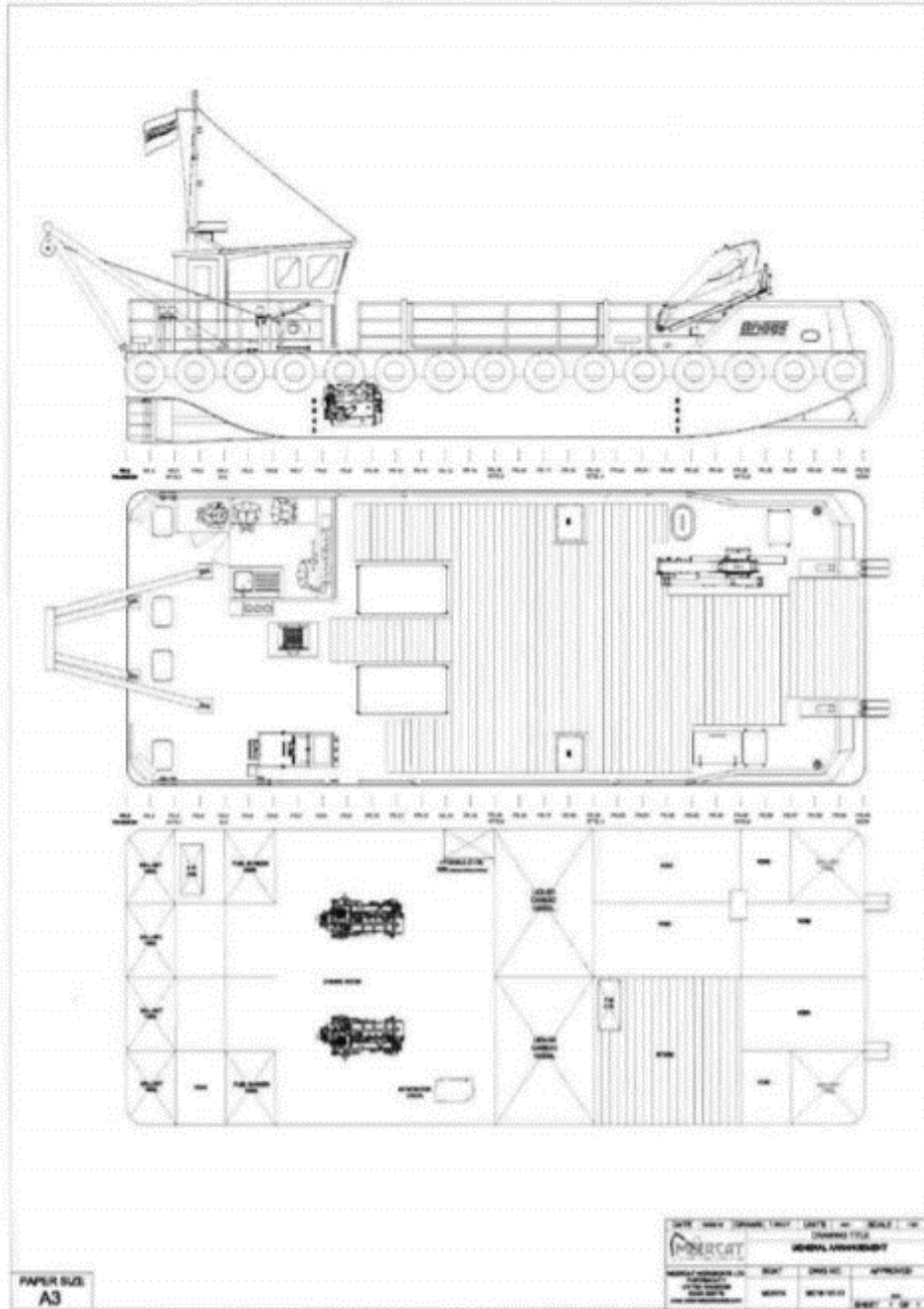


Figure 1 – Vessel GA