



ENQUIRIES@BRIGGSMARINE.COM  
+44 1592872939

**VESSEL DETAILS**

**YEAR OF BUILD**  
2007

**LENGTH**  
26.00m

**BREADTH**  
11.50m

**MAX DRAFT**  
2.69m

**MIN DRAFT**  
2.25m

**MAIN ENGINES**  
3 x Caterpillar 3412D TTA

**CRANES**  
1 x HS Marine AKC 325 HE 3  
1 x HS Marine AKC 145 HE 2

**GROSS TONNAGE**  
167T

**WINCHES**  
1 x Ridderinhof 50T SWL anchor handling winch  
1 x 20T SWL Tugger winch  
2 x 6T SWL Tugger winch

**ACCOMMODATION**

8 berths  
4 Cabins

**CERTIFICATION**

Bureau Veritas Tug Unrestricted Navigation  
MCA Workboat Code Category 1

**BHP**

2543

**BOLLARD PULL**

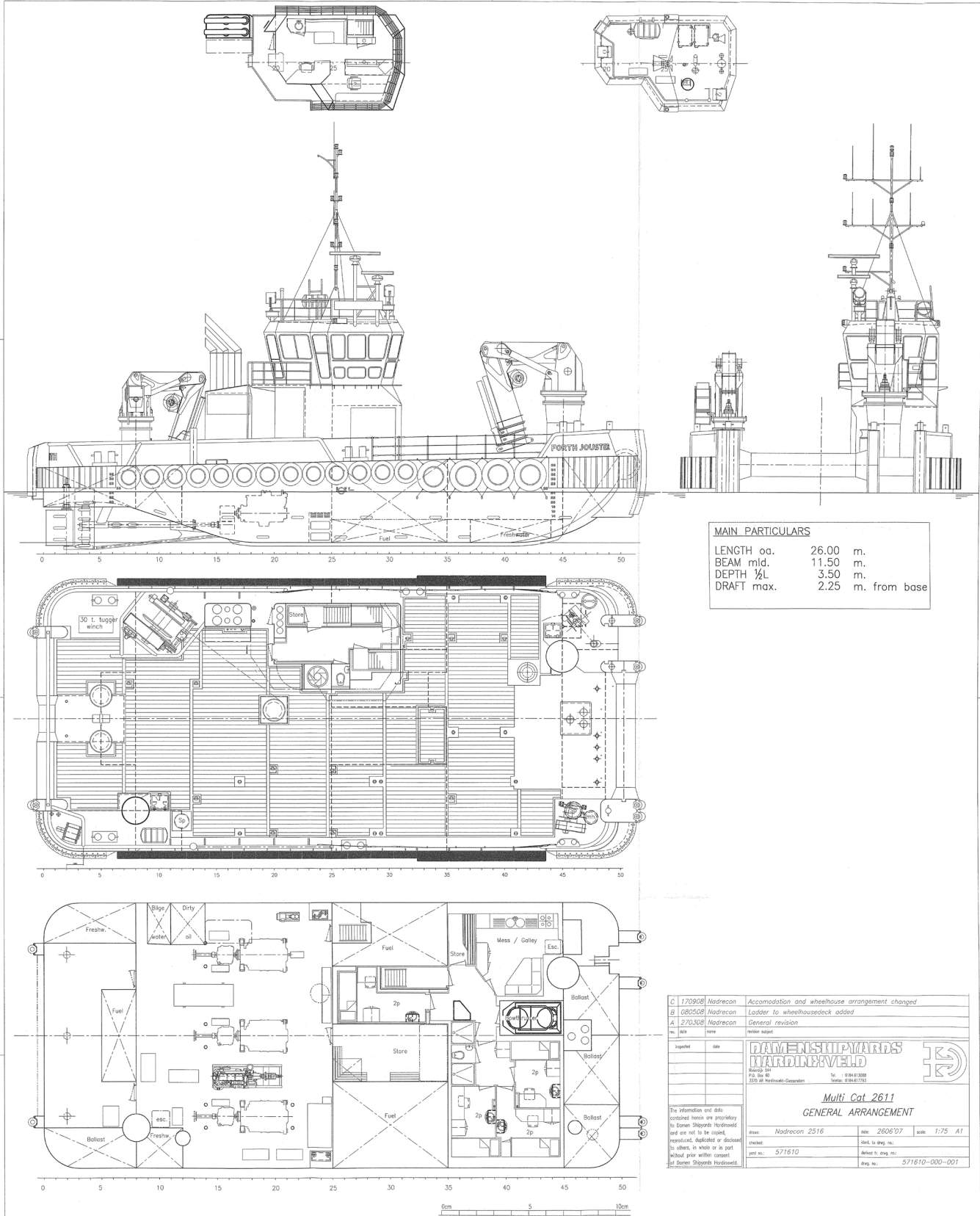
34T



FOR DETAILS:

ENQUIRIES@BRIGGSMARINE.COM

+44 1592872939



MAIN PARTICULARS	
LENGTH oa.	26.00 m.
BEAM mld.	11.50 m.
DEPTH 1/4L	3.50 m.
DRAFT max.	2.25 m. from base

C 170908	Nadreccon	Accommodation and wheelhouse arrangement changed
B 080508	Nadreccon	Ladder to wheelhouse deck added
A 270308	Nadreccon	General revision
no.	date	revision subject
Project	date	
<b>DAMENSHIPYARDS</b> <b>WARDENVEELD</b> <small>P.O. Box 401, 2200 AH Wardenveeld, Groningen, The Netherlands</small> <small>Tel.: 0146 61 3300, Fax: 0146 61 7333</small>		
<b>Multi Cat 2611</b> <b>GENERAL ARRANGEMENT</b>		
Drawn:	Nadreccon 2516	date: 26/06/07 scale: 1:75 A1
Checked:		Scale: to ship no.
Project no.:	571610	Scale: to ship no.
		Ship no.: 571610-000-001

The information and data contained herein are proprietary to Damen Shipyards Wardenveeld and are not to be copied, reproduced, applied or disclosed to others, in whole or in part without prior written consent of Damen Shipyards Wardenveeld.

